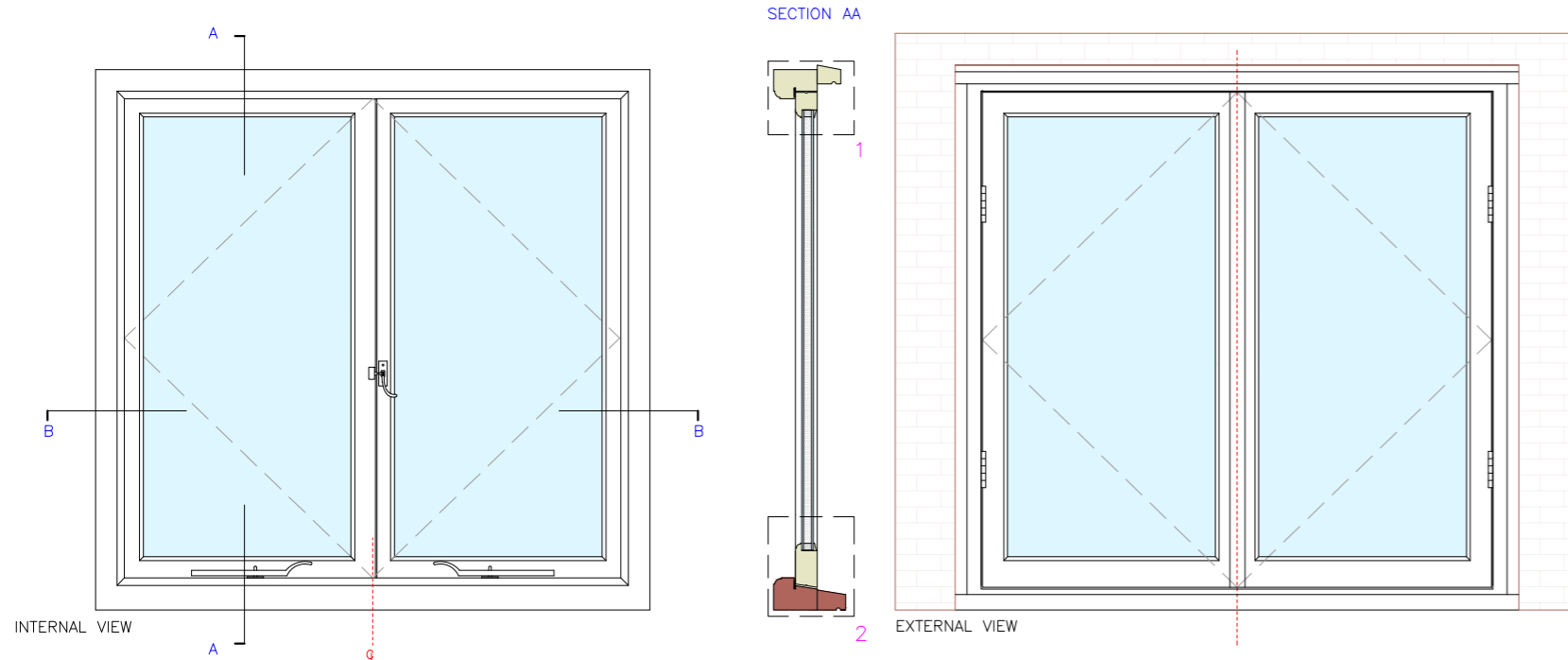
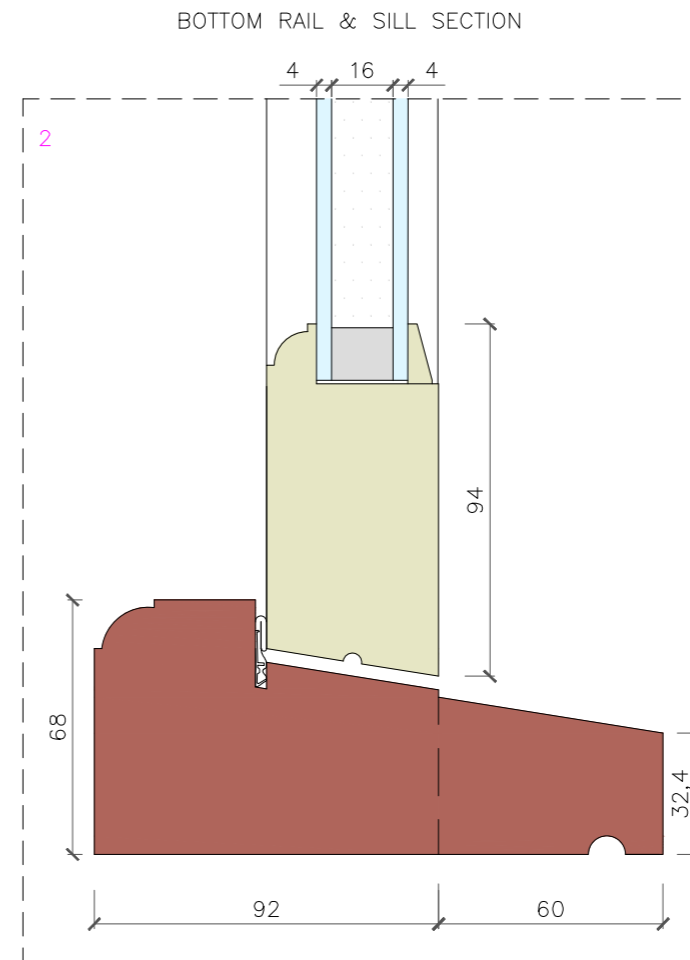
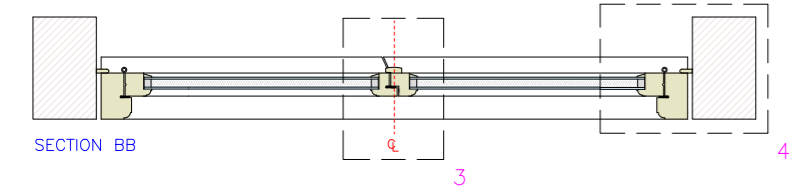
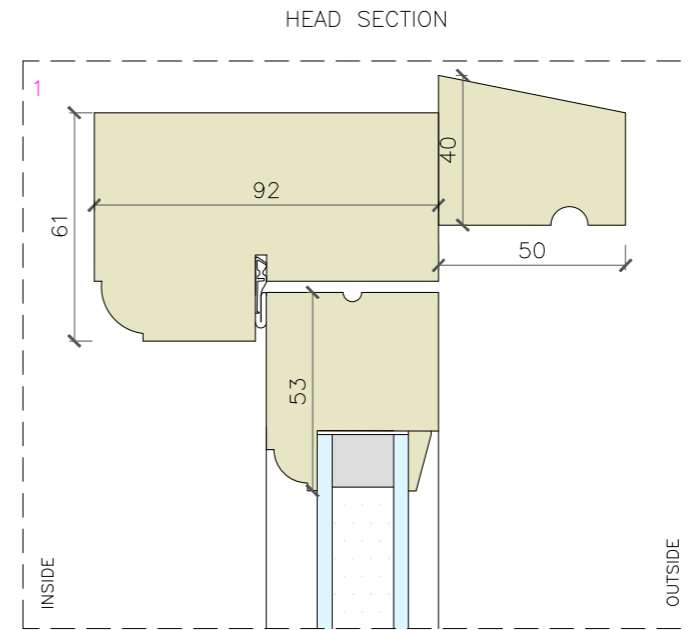


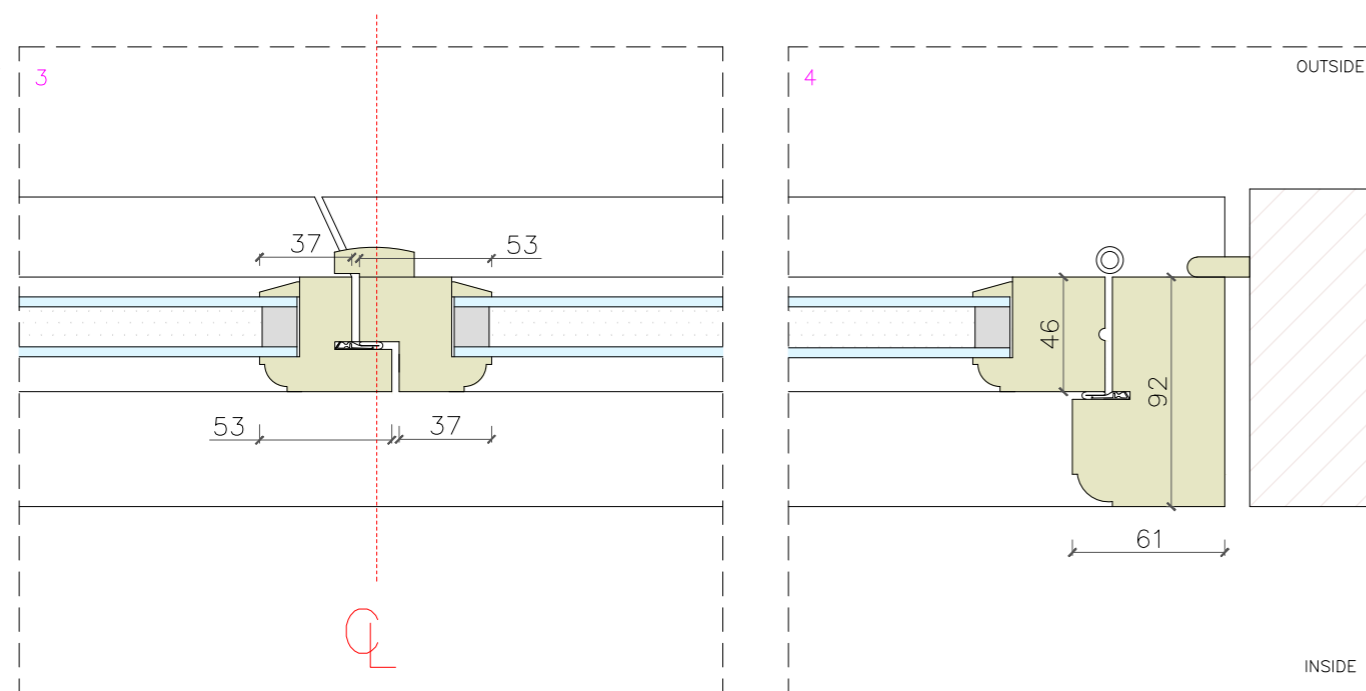
DOUBLE CASEMENT
SCALE 1:15



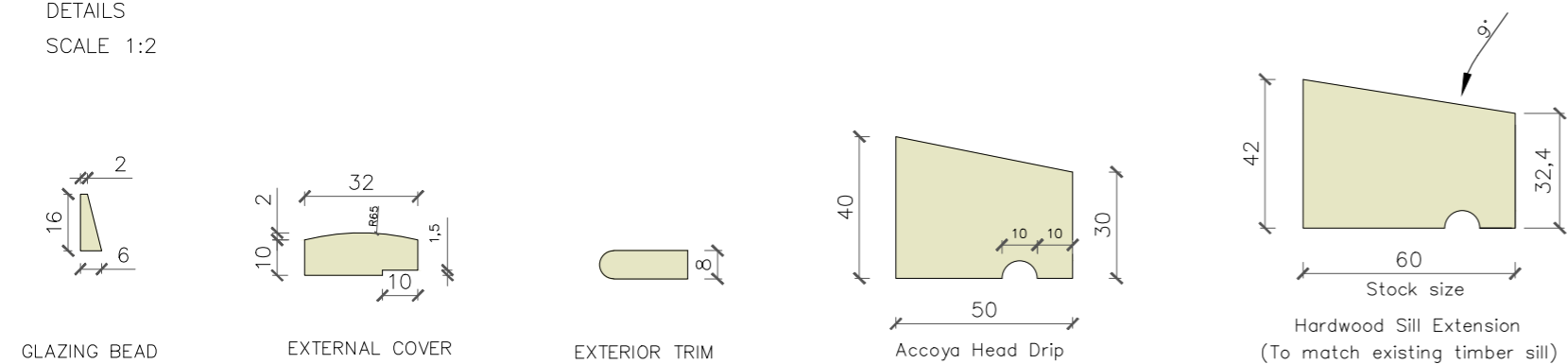
DETAILS 1 & 2
SCALE 1:2



DETAIL 3 & 4
SCALE 1:3



DETAILS
SCALE 1:2



Tel: 020 8017 1632
info@londonsash.com
The London Sash Window Company
41 High Street, London SE20 7HJ

DO NOT SCALE THIS DRAWING. USE FIGURE DIMENSIONS

NOTES:

- A) Timber: Scandinavian redwood (softwood).
- B) 4mm Low-e glass to internal pane.
16 mm warm edge white spacer bar, argon filled.
4mm clear float glass to external pane.
- C) All glass panels below 800mm from the Finished Floor Level (FFL) to be fitted with safety glass.
Either Toughened Safety Glass or Laminate glass.
Small marking to be shown on bottom corner of glass pane
- D) Paint Colour: RAL 9016.
Eggshell finish (inside & out)
- E) Internal "OVOLO" mould.
- F) Bottom rail - 94mm.
- G) Top rail - 53mm.
- H) Draught exclusion weather seal.
- I) Casement stay
- J) Casement fastener

CLIENT:	N/A
LOCATION:	N/A
SCALE:	Drawing scale @A3
DRAWN BY:	TB
DATE	6 December 2021
DRAWING TITLE:	Standard Double Casement
DRAWING NUMBER:	1
PURPOSE OF ISSUE:	For Information
QUANTITY:	N/A
REVISION:	N/A