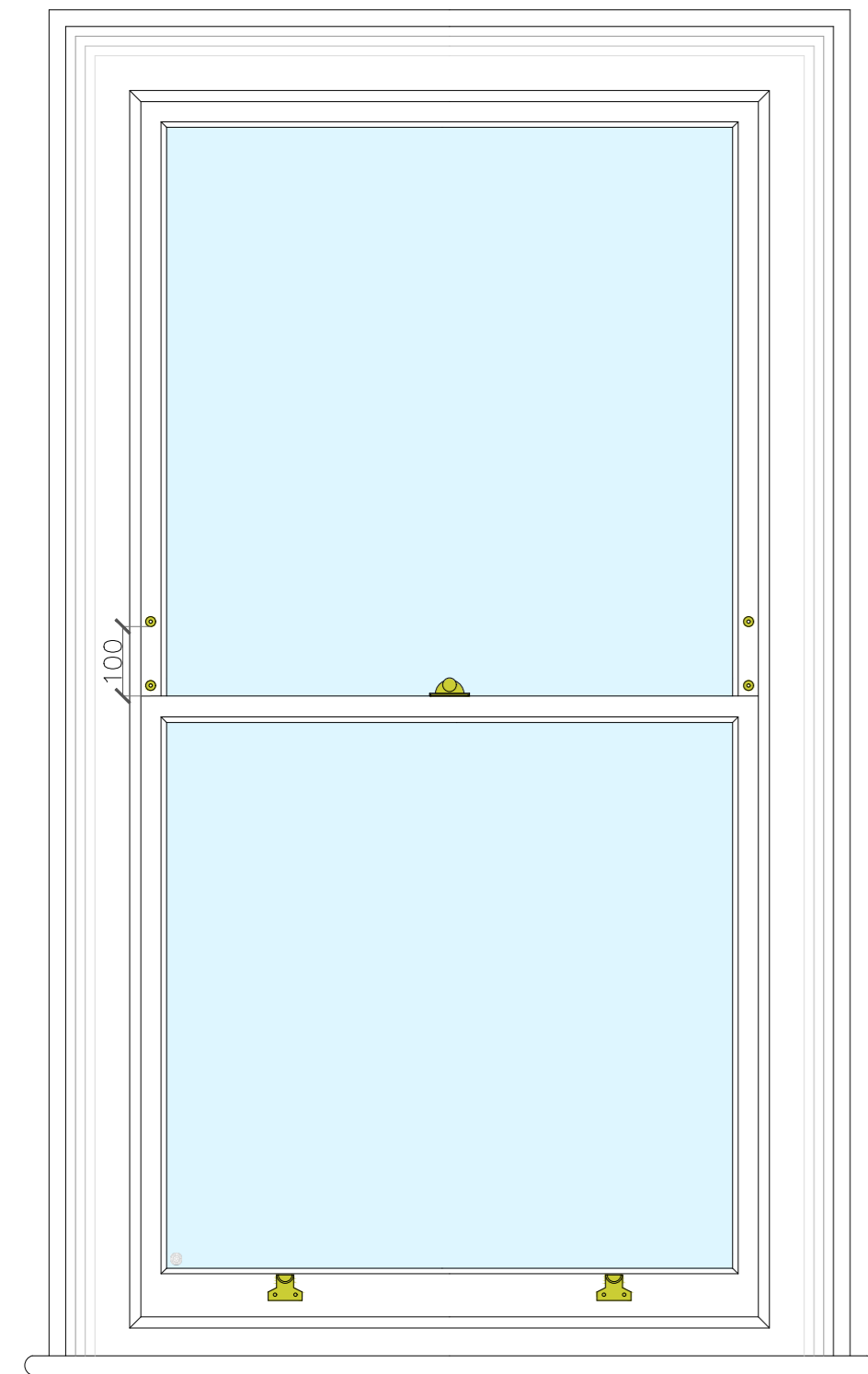
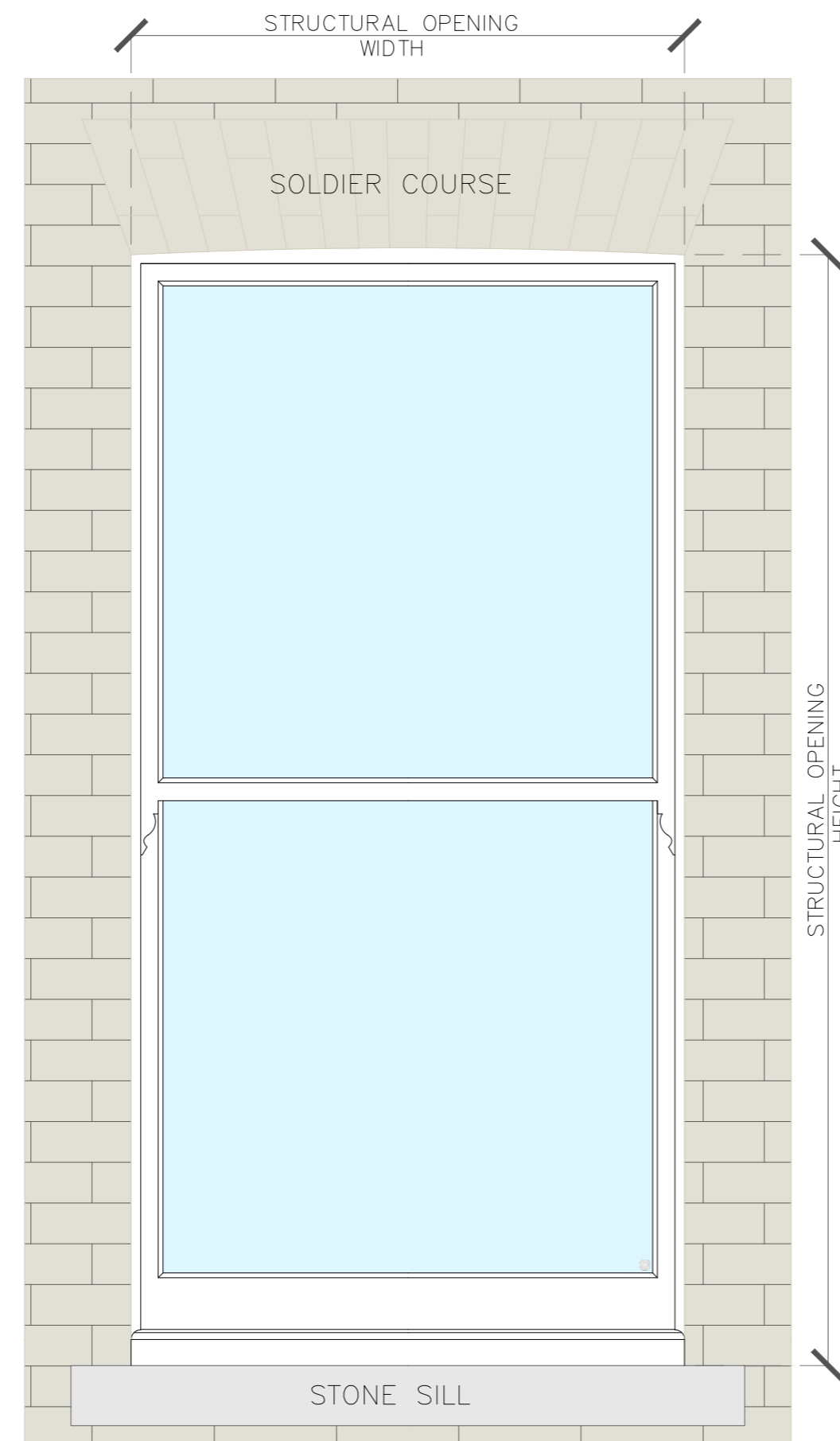
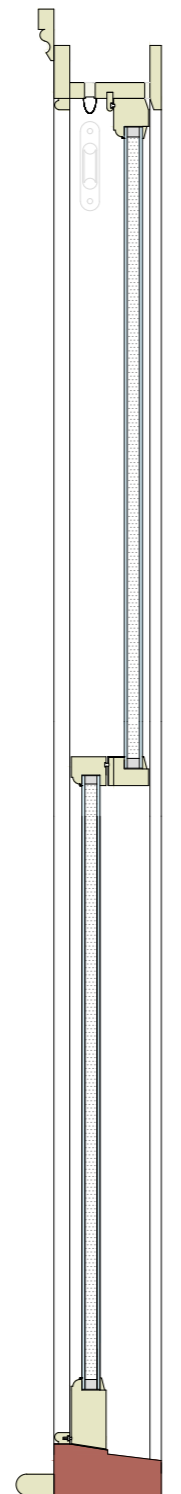


STANDARD DOUBLE GLAZED SASH WINDOW
SCALE 1:10



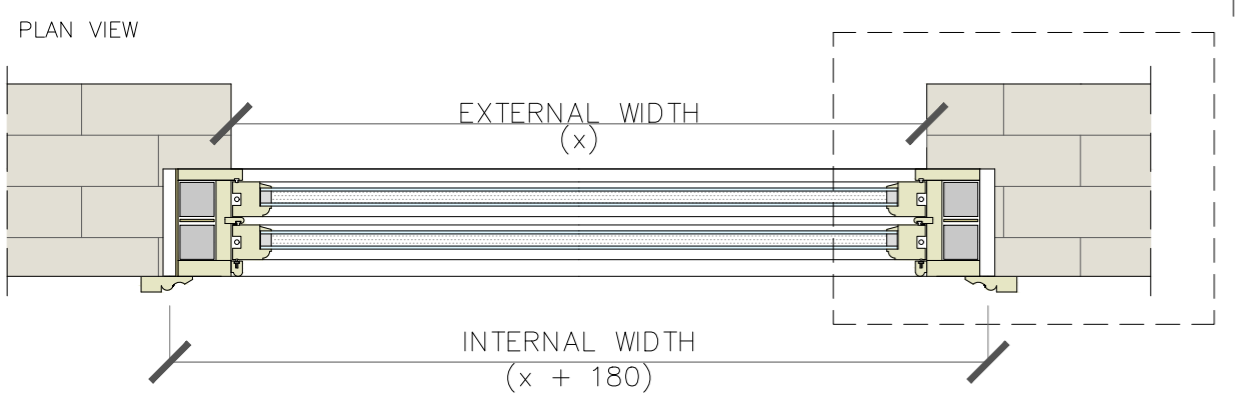
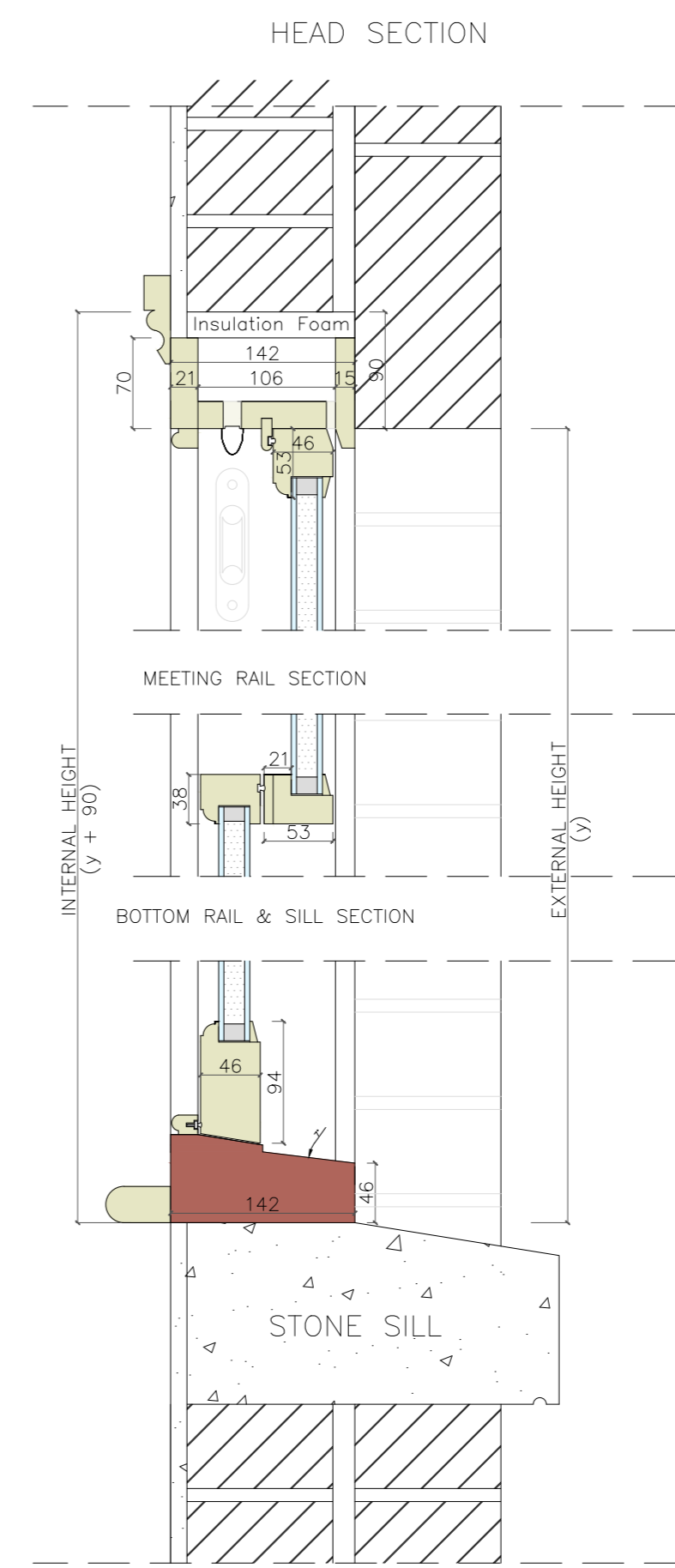
INTERNAL ELEVATION

SECTION

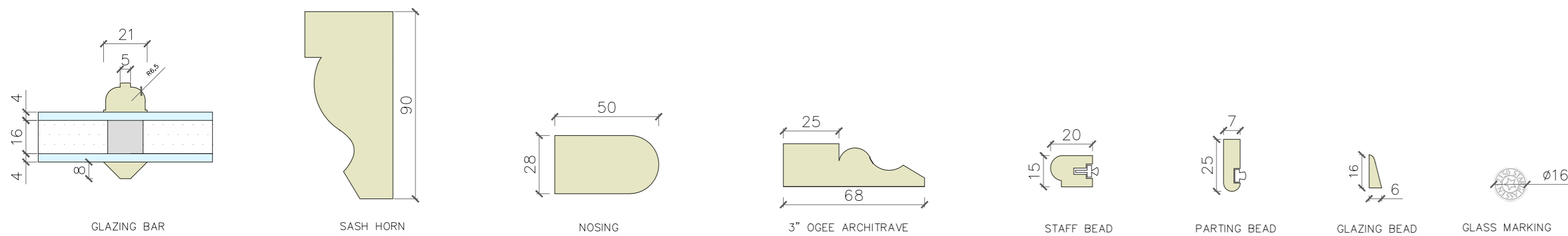


EXTERNAL ELEVATION

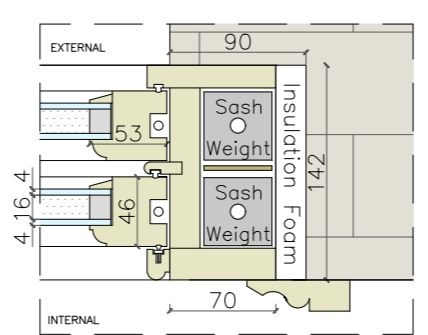
CROSS SECTION DETAIL
SCALE 1:5



DETAIL SCALE 1:2



DETAIL 1
SCALE 1:5



Tel: 020 8017 1632
info@londonsash.com
The London Sash Window Company
41 High Street, London SE20 7HJ

DO NOT SCALE THIS DRAWING. USE FIGURE DIMENSIONS

- NOTES:
- A) Timber: Scandinavian redwood (softwood).
 - B) 4mm Low-e glass to internal pane.
16mm warm edge spacer bar. argon filled.
4mm clear float glass to external pane.
 - C) Safety glass fitted as per building regulation.
Small marking to be shown on bottom corner of glass pane
 - D) Paint Colour: RAL 9016. Eggshell finish (inside & out)
 - E) Internal "OVOLO" mould.
 - F) Bottom rail - 94mm.
 - G) Meeting rail - 38mm.
 - H) Top rail - 53mm.
 - I) Inside Head - 70mm.
 - J) Hardwood sill - 68 x 142mm.
 - K) Staff bead - 15mm x 20mm.
 - L) Parting bead - 7mm x 25mm.
 - M) Draught exclusion weather seal.
 - N) 3" Ogee Architrave .
 - O) Bull nosing - 28mm x 50mm.
 - P) Brighton fastener
 - Q) Sash lifts
 - R) Rola lock - Key operated
Maximum opening 100mm when in locked position
 - S) Trickle vent fitted to frames as per building regulation.

CLIENT:	N/A
LOCATION:	N/A
SCALE:	Drawing scale @A2
DRAWN BY:	TB
DATE	15 March 2024
DRAWING TITLE:	For Information
DRAWING NUMBER:	Standard Box_1
PURPOSE OF ISSUE:	For Information
QUANTITY:	N/A
REVISION:	N/A